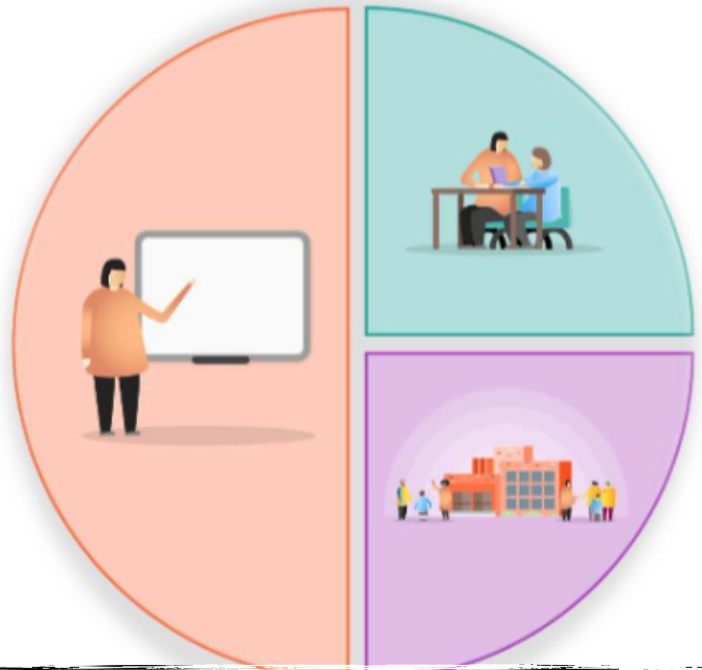


1. Teaching

- x High quality responsive teaching and feedback used within lessons to identify and prioritise gaps in learning.
- x A broad and engaging curriculum that focuses on vocabulary acquisition.
- x Whole-class reading approach underpinned by clearly defined formative assessment practices.
- x Effective diagnosed assessments in place for core subjects.
- x Multiple-choice question quizzes across the curriculum to support, retrieve and review key knowledge and concepts.
- x Explicit instructions & scaffolding used in lessons to support and FKLOGUHQT V LQGHS H
- x Deliberately reduce workload (eg.- reduced meetings) during the assessment cycle to aid staff wellbeing and enable high-quality responsive teaching.
- x Google Classroom and seesaw used as a teaching and learning platform across school.



2. Targeted academic support

- x Same-day in-class intervention.
- x Teacher employed for 1:1 and small group tutoring in Reception, KS1 & KS2.
- x Deployment of TAs
- x High quality phonics and reading CPD provided by school and Ebor ESIT team.

3. Wider Strategies

- x Provide ongoing technical support for parents and careers.
- x Access to technology and online learning platforms.
- x Ensure our most vulnerable pupils have priority access to classroom teaching and online materials.
- x Extensive Physical Education provision across school
- x Attendance team support
- x Partnership with CMOOSC -Breakfast Club and after School Club